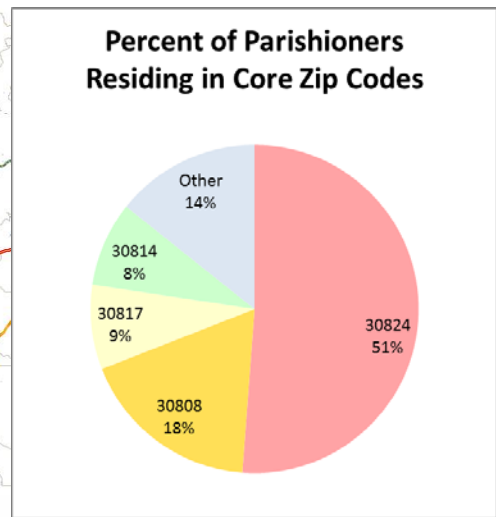
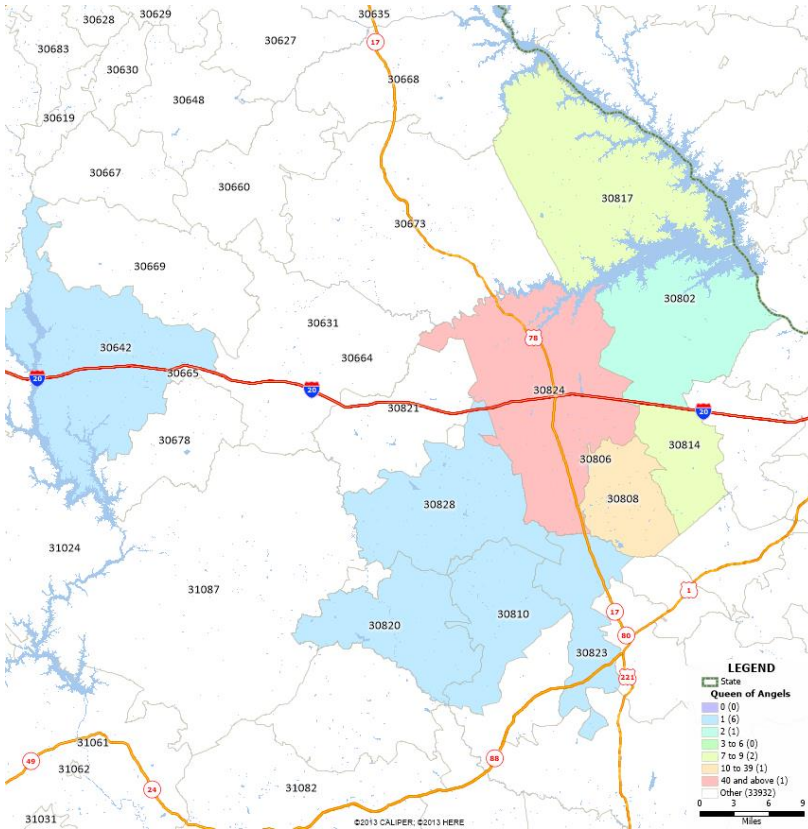


# QUEEN OF ANGELS

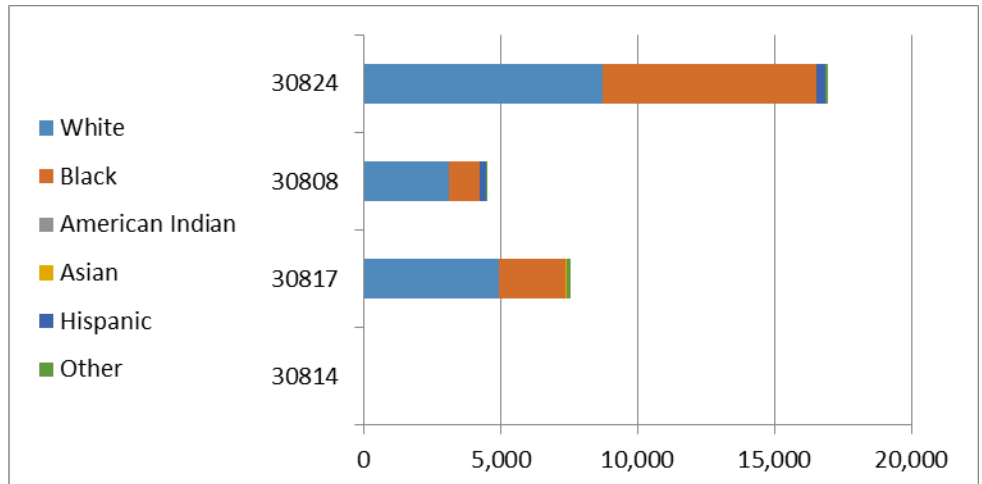
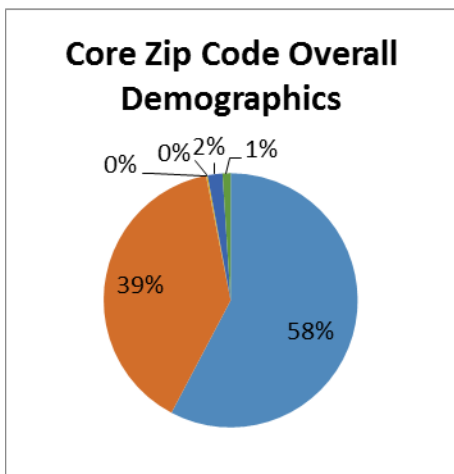
## Geo-Demographic Summary



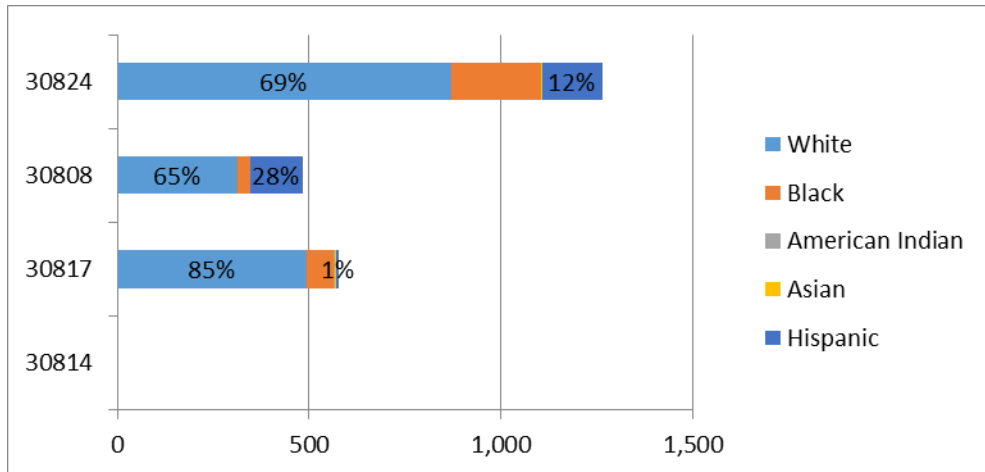
Registered Households by Zip Code (ParishSoft, June 2016). The four zip codes with the most Registered Parishioners are considered Core Zip Codes for the report.



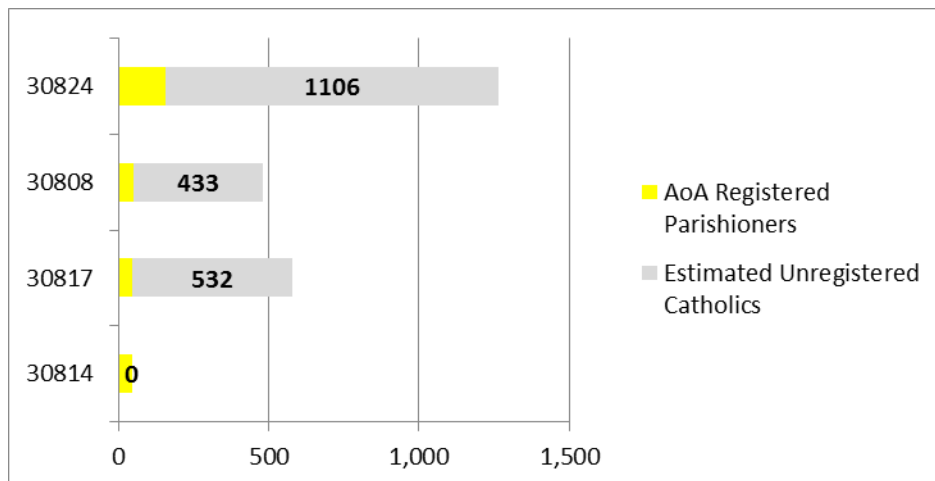
The Census data gives us the **Total Population** living in each of your Core Zip Codes by race/ethnicity.



Using the Census population count, we estimate the **Total Catholic Population<sup>1</sup>** in your Core Zip Codes.



Using Parish Soft data, we can then estimate the number of unregistered Catholics, or the total “opportunity” for growth in the Core Zip Codes at our parishes. N.B. We estimate 3.3 individuals per Archdiocesan household.



Finally, by comparing estimated growth from the 2010 Census, we can estimate a range of **Projected Overall Catholic Growth<sup>2</sup>** the parish’s core zip codes.

