



SAINT MATTHEW CATHOLIC CHURCH

25 Wilkins Road, S.W., Winder, Georgia 30680
Phone: (770) 867- 4876 Fax: (770) 867- 6034
www.saintmatthewcc.org

November 30, 2017

FY 2016 - FY 2017 FINANCE COUNCIL REPORT

Dear Friends,

Because of your generosity, we were able to make a lot of progress. We thank you for all your support. We are pleased to provide you St. Matthew's financial results for fiscal year ending June 30, 2017. See attached.

Our parish has grown to 1,641 families as compared to 1,500 families last year. However, this 9% growth did not reflect increase our offertory contribution in 2017 of \$527,000 compared to last year to \$542,000.

We paid the Archdiocese mortgage principal of \$186,617 and interest expense of \$44,954 or a total of \$231,571 compared to this year's Burn the Mortgage Contributions (BTMC) of \$227,372. Thanks to your continued generosity, we added to the principal payments, the net proceeds from fundraisings and special donations as follows:

| | |
|----------------------------------|--------------|
| • Raffle | \$15,089 |
| • Kermes | 13,000 |
| • He Has Risen Painting | 1,580 |
| • Christmas Tree Sale | 1,401 |
| • One-time Parishioner Donations | <u>7,500</u> |
| TOTAL | \$ 38,570 |

As of June 30, 2017, our parish assessments and school subsidies payable to the Archdiocese of Atlanta increased to \$627,993, including current year assessments of approximately \$93,000. We paid \$32,000 during the year.

Our parishioners contributed via online giving approximately \$124,000 this year compared to \$100,000 last year to offertory, BTMC, Archdiocesan second collections and Religious Education (RE) tuition. This year, the parish office started accepting credit card payments from parishioners.

Traditionally, members of St. Matthew have shown a commitment to the Catholic faith and to other parishioners through generous contributions. Your consistent tithing will enable our parish to accomplish our financial obligations for fiscal year 2018. We hope to continue our good work together.

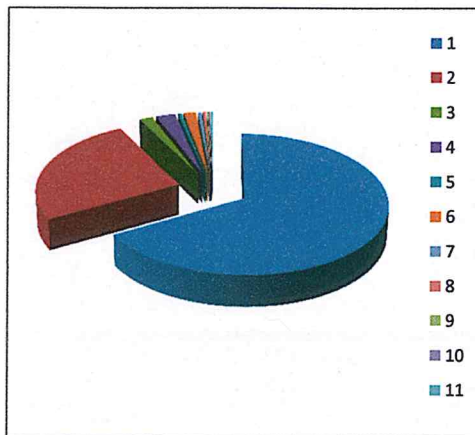
If you have any questions or concern, please feel free to contact any member of our Parish Finance Council listed below:

Paul Hill, Chairman (770-361-6773)
Jorge Ascunce, Member (770-868-1930)
Joe Cox, Member (770-318-6314)
Gary Hardesty, Member (678-591-6851)

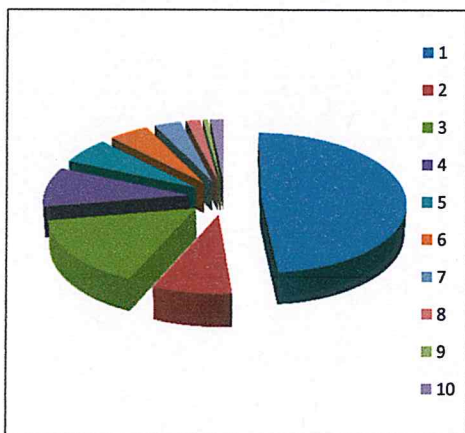
Fred Hedges, Member (706-654-3526)
Rosa Montoya, Member (404-740-8869)
Jack Todd, Member (770-633-5733)

St. Matthew Catholic Church - Winder

REVENUE AND EXPENSES Fiscal Year Ending June 30, 2017



| | | | |
|---------------------------|-------------------|---------------|-----|
| Offertory | \$ 525,117 | 65.9% | (1) |
| Building Fund | \$ 227,372 | 28.5% | (2) |
| Other Income | \$ 6,952 | 0.9% | |
| Religious Education | \$ 14,021 | 1.8% | (3) |
| Endowment Income | \$ 2,848 | 0.4% | |
| 2016 Annual Appeal Refund | \$ 9,845 | 1.2% | (4) |
| Altar Flowers | \$ 3,770 | 0.5% | |
| Votives | \$ 3,036 | 0.4% | |
| Georgia Bulletin | \$ 2,235 | 0.3% | |
| Leases and Rental Income | \$ 600 | 0.1% | |
| Interest Income | \$ 1,559 | 0.2% | |
| TOTAL REVENUE | \$ 797,355 | 100.0% | |



| | | | |
|---|---------------------|---------------|-----|
| Salaries/Benefits | \$ 305,532 | 42.9% | (5) |
| Loan Interest | \$ 44,954 | 6.3% | (6) |
| Archdiocesan Support | \$ 96,514 | 13.6% | (7) |
| Utilities | \$ 61,573 | 8.6% | |
| Maintenance/Insurance | \$ 49,080 | 6.9% | |
| Supplies/Flowers/Postage | \$ 29,744 | 4.2% | |
| Food/Auto/Retreat | \$ 18,510 | 2.6% | |
| Books/Publications | \$ 9,901 | 1.4% | |
| Replacements | \$ 82,188 | 11.5% | (8) |
| Miscellaneous Admin | \$ 13,941 | 2.0% | |
| TOTAL EXPENSES | \$ 711,938 | 100.0% | |
| REVENUE OVER EXPENSES | \$ 85,417 | | |
| Burn the Mortgage Principal Payments | \$ 186,617 | | |
| NET | \$ (101,200) | | |

- (1) Total offertory is (\$45,000) lower than the budget of \$570,000 even with 9% increase in parishioner membership.
- (2) BTMC includes net proceeds from raffle, Kermes and other fundraisings/donations, reducing our debt to \$1,752,000.
- (3) Religious Education (RE) income includes tuition from 358 religious education students and RE store sales.
- (4) Annual Appeal refund is for parishioner contributions in excess of parish goal of \$46,000.
- (5) Total salary/benefits is reduced by \$14,000 due to restructure of the administrative department.
- (6) Interest is lower compared to last year of \$52,000 due to accelerated principal payments during the year.
- (7) Archdiocesan support includes general assessment of \$63,578 and school subsidy of \$29,828 which were accrued this fiscal year.
- (8) Replacements include installing new heat pumps in the church and RE building, replacing RE roof, and upgrading original appliances in the rectory.